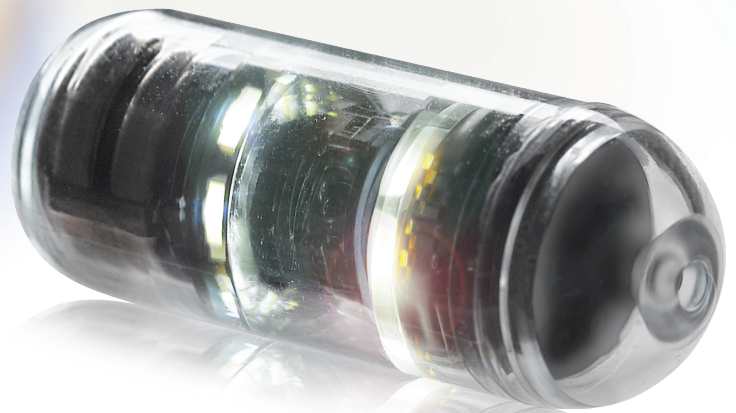




## See More. Diagnose Smarter.

Experience the **360° difference**  
with the all-new CapsoCam® Plus

Now with higher resolution and double the memory, CapsoCam® Plus provides the most comprehensive imaging available today.



### CapsoCam Plus: By the Numbers

- 221,184 pixels
- 1 GB storage memory
- 4 ultra-compact wide angle cameras
- 360° panoramic view
- 20 FPS maximum
- 16 independently controlled LEDs
- 15 hours of battery life

*"On the basis of the CapsoCam®, which imaged the distal small bowel, we found traces of Crohn's disease, which changed the patient management completely."*

**Dr. Simon Anderson**  
Consultant Physician and Gastroenterologist,  
St. Thomas Hospital, London, England

### Break Free from Restrictive Receiver Equipment

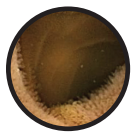
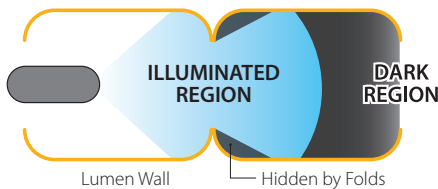
CapsoCam Plus uses a large-capacity onboard storage system that completely eliminates the need for external receiver equipment. This wire-free onboard storage design makes capsule administration faster and easier, while eliminating the risks associated with radio frequency (RF) signals. Benefits of the CapsoCam Plus wire-free design include:

- Zero capital investment and maintenance costs
- Safe for patients with electronic implants
- Increased operational efficiency
- Reduced physician/nurse procedure room time
- No scheduling bottlenecks

# What You See Is What You Get

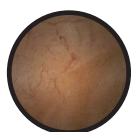
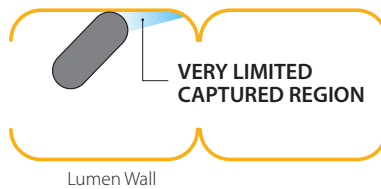
End-facing cameras only provide a limited view of the mucosa. Tumbling, incomplete illumination, and mucosal folds can further limit the value of an axial view capsule endoscope.

## Disadvantages of an End-Facing Camera



### TUNNEL PATTERN

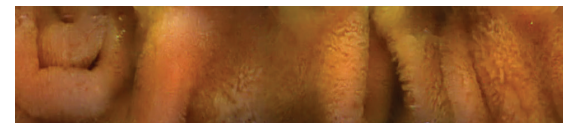
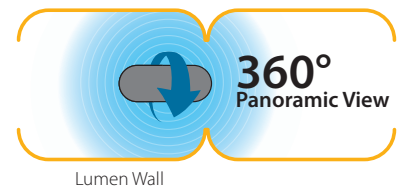
Limiting depth of view causes dark regions where it is hard to see.



### WALL PATTERN

Capsule is pressed against wall resulting in very small region being captured.

## CapsoCam® Plus Advantage



CapsoCam Plus 360° panoramic view of mucosa.

CapsoCam® Plus overcomes these barriers by using four laterally oriented cameras to provide a full 360° panoramic image of the mucosa.

**A recent study revealed 32% higher diagnostic yield with CapsoCam®.<sup>1</sup>**

*"We've compared it with the front-view capsules, and we have a better result with CapsoCam®."*

### Dr. Thomas Pachofszky

Medizinische Abteilung mit Gastroenterologie, Hepatologie und Zentralendoskopie, KA Rudolfstiftung, Vienna, Austria

To learn more or to set up a demonstration, contact your local CapsoVision representative.



CapsoVision, Inc. ■ 18805 Cox Ave # 250, Saratoga, CA 95070  
p. 408 624 1488 ■ f. 408 370 4795 ■ info@capsovision.com ■ www.capsovision.com

© 2016, CapsoVision, Inc., 01/2016 PN ADV-2553 Rev. B OUS

<sup>1</sup>Prospective randomized comparison between axial and lateral viewing capsule endoscopy in patients with obscure digestive bleeding. M. Pioche (1), G. Vanbiervliet (2), P. Jacob (3), C. Duburque (4), R. Gincul (1), B. Filoche (4), J. Daudet (3), J. Filippi (2), T. Ponchon (1), J.C. Saurin (1). (1) Lyon; (2) Nice; (3) Nîmes; (4) Lille. French Society of Digestive Endoscopy (SFED)